

ASME B16.15-2018
(Revision of ASME B16.15-2013)

Cast Copper Alloy Threaded Fittings

Classes 125 and 250

ASMENORMDOC.COM : Click to view the full PDF of ASME B16.15-2018

AN AMERICAN NATIONAL STANDARD



**The American Society of
Mechanical Engineers**

ASME B16.15-2018
(Revision of ASME B16.15-2013)

Cast Copper Alloy Threaded Fittings

Classes 125 and 250

ASMENORMDOC.COM : Click to view the full PDF of ASME B16.15 2018

AN AMERICAN NATIONAL STANDARD



**The American Society of
Mechanical Engineers**

Two Park Avenue • New York, NY • 10016 USA

Date of Issuance: October 12, 2018

The next edition of this Standard is scheduled for publication in 2023.

ASME issues written replies to inquiries concerning interpretations of technical aspects of this Standard. Periodically certain actions of the ASME B16 Committee may be published as Cases. Cases and interpretations are published on the ASME website under the Committee Pages at <http://cstools.asme.org/> as they are issued.

Errata to codes and standards may be posted on the ASME website under the Committee Pages to provide corrections to incorrectly published items, or to correct typographical or grammatical errors in codes and standards. Such errata shall be used on the date posted.

The Committee Pages can be found at <http://cstools.asme.org/>. There is an option available to automatically receive an e-mail notification when errata are posted to a particular code or standard. This option can be found on the appropriate Committee Page after selecting "Errata" in the "Publication Information" section.

ASME is the registered trademark of The American Society of Mechanical Engineers.

This code or standard was developed under procedures accredited as meeting the criteria for American National Standards. The Standards Committee that approved the code or standard was balanced to assure that individuals from competent and concerned interests have had an opportunity to participate. The proposed code or standard was made available for public review and comment that provides an opportunity for additional public input from industry, academia, regulatory agencies, and the public-at-large.

ASME does not "approve," "rate," or "endorse" any item, construction, proprietary device, or activity.

ASME does not take any position with respect to the validity of any patent rights asserted in connection with any items mentioned in this document, and does not undertake to insure anyone utilizing a standard against liability for infringement of any applicable letters patent, nor assume any such liability. Users of a code or standard are expressly advised that determination of the validity of any such patent rights, and the risk of infringement of such rights, is entirely their own responsibility.

Participation by federal agency representative(s) or person(s) affiliated with industry is not to be interpreted as government or industry endorsement of this code or standard.

ASME accepts responsibility for only those interpretations of this document issued in accordance with the established ASME procedures and policies, which precludes the issuance of interpretations by individuals.

No part of this document may be reproduced in any form,
in an electronic retrieval system or otherwise,
without the prior written permission of the publisher.

The American Society of Mechanical Engineers
Two Park Avenue, New York, NY 10016-5990

Copyright © 2018 by
THE AMERICAN SOCIETY OF MECHANICAL ENGINEERS
All rights reserved
Printed in U.S.A.

CONTENTS

Foreword	v
Committee Roster	vii
Correspondence With the B16 Committee	viii
Summary of Changes	x
List of Changes in Record Number Order	xi
1	Scope	1
2	General	1
3	Pressure–Temperature Ratings	1
4	Size	2
5	Marking	2
6	Material	2
7	Threads	2
8	Ribs	2
9	Surface Finish	3
10	Fitting Dimensions	3
11	Tolerances	3
12	Pressure Test	3
 Mandatory Appendix		
I	References	17
 Nonmandatory Appendix		
A	Quality System Program	18
 Figure		
4.2-1	Identification of Reducing Fittings	4
 Tables		
3.1-1	Pressure–Temperature Ratings	3
7.1.3-1	Dimensions of 90-deg Elbows, Tees, Crosses, 45-deg Elbows, and Couplings (Straight Sizes) — Class 125	5
7.1.3-2	Dimensions of Caps — Class 125	6
7.1.3-3	Dimensions of Outside Head, Inside Head, and Face Bushings — Class 250	7
10.1.2-1	Dimensions of 90-deg Elbows (Reducing Sizes) — Class 125	9
10.1.2-2	Dimensions of Tees (Reducing Sizes) — Class 125	10
10.1.2-3	Dimensions of 90-deg Elbows (Reducing Sizes) — Class 250	11
10.1.2-4	Dimensions of Tees (Reducing Sizes) — Class 250	12
10.1.2-5	Dimensions of Square Head and Square Socket Plugs	13

10.1.2-6	Dimensions of Reducers, Closed and Open Pattern Return Bends, and 45-deg Y Branches (Straight Sizes) — Class 125	14
10.1.2-7	Dimensions of 90-deg and 45-deg Street Elbows — Class 125	15
10.1.2-8	Dimensions of 90-deg Elbows, Tees, Crosses, 45-deg Elbows, and Couplings (Straight Sizes) — Class 250	16
11.3-1	Inspection Tolerances, Center-to-End and Center-to-Center	16

ASMENORMDOC.COM : Click to view the full PDF of ASME B16.15 2018

FOREWORD

As early as the spring of 1921, the consolidation and further development of threaded and flanged fittings standards in force in the United States seemed desirable. To meet this need, the American Standards Association (ASA) [now the American National Standards Institute (ANSI)] authorized the organization of a Sectional Committee on the Standardization of Pipe Flanges and Flanged Fittings (B16), with the Heating, Piping, and Air Conditioning Contractors' National Association (now known as the Mechanical Contractors Association of America), the Manufacturers Standardization Society of the Valve and Fittings Industry (MSS), and The American Society of Mechanical Engineers (ASME) acting as joint sponsors.

In June 1927, the MSS appointed a committee on Nonferrous Screw Fittings for the purpose of developing standards for products commonly designated as threaded pipe fittings of brass, bronze, and other nonferrous materials. At the time, brass threaded fittings were furnished from a number of different patterns with wide variations in dimensions and weights.

MSS SP-10 for 125-lb bronze screwed fittings and MSS SP-11 for 250-lb bronze screwed fittings were developed and adopted by the MSS in September 1930. The lighter fittings were patterned after malleable iron threaded fittings, then standardized in ASA B16c, while the heavier products were patterned after the cast iron threaded fittings covered by ASA B16d. Thus, a practice was standardized that had been found satisfactory in the valve and fittings industry for many years.

Following the publication of revised editions in 1941 and 1943, SP-10 was submitted to Subcommittee No. 2 of ASA Sectional Committee B16 for adoption as an American Standard. Final approval of that edition was granted on January 23, 1947, with the designation ASA B16.15. A reaffirmation of the Standard was granted in 1952, and a complete revision updating the Standard was approved by ASA on March 25, 1958.

After revision in 1944, SP-11 was submitted to Subcommittee No. 2 in August 1947, and ASA granted the approval of B16.17 on April 6, 1949.

In 1961, Subcommittee No. 2 reviewed the two Standards and noted that the historical reason for their separate existence no longer applied. Accordingly, the two were combined into ASA B16.15 with final ASA approval granted on February 6, 1964.

In 1969, the document was reviewed by Subcommittee No. 2, and minor changes were proposed. Final ANSI approval was granted on April 14, 1971.

In 1977, the MSS submitted a proposed revision to Subcommittee B (formerly No. 2) for B16 review and approval. Changes included the addition of metric (SI) units and editorial updating. ANSI granted final approval on December 4, 1978.

In 1982, American National Standards Committee B16 was reorganized as the ASME B16 Committee, operating under procedures accredited by ANSI. A revision, following regular 5-yr review by Subcommittee B, involved rationalization of metric equivalent dimensions and updating of reference standards. Following approval within ASME, ANSI approval was granted on July 30, 1985, with the designation ANSI/ASME B16.15-1985.

In 1994, and again in 2004, the document was reaffirmed.

In 2005, Subcommittee B of the ASME B16 Committee changed the title to Cast Copper Alloy Threaded Fittings, a section on leakage capacity was added, and nominal size (DN) according to ISO 6078 was addressed as SI values were positioned in the main text and U.S. Customary values were positioned in Mandatory Appendix I. The reference for gaging internal fitting threads was made clearer by using the wording from ASME B1.20.1, Pipe Threads, General Purpose (Inch). Many clarifying and editorial revisions were made to improve the text. After approval by ASME, ANSI approval was granted on August 25, 2006, with the designation ASME B16.15-2006.

In 2011, references to ASME standards were revised to no longer list specific edition years; the latest edition of ASME publications applies unless stated otherwise. Materials manufactured to other editions of the referenced ASTM standards have been permitted to be used to manufacture fittings meeting the requirements of this Standard as long as the fitting manufacturer verifies the material meets the requirements of the referenced edition. Following approval by the ASME B16 Standards Committee, the revision to the 2006 edition was approved as an American National Standard by ANSI on August 9, 2011, with the designation ASME B16.15-2011.

In the 2013 edition, section 7 was revised to require threads and gaging practices to be as per and identical with ASME B1.20.1 and other B16 standards. Following approval by the ASME B16 Standards Committee, approval as an American National Standard was given by ANSI on July 29, 2013, with the designation ASME B16.15-2013.

In this 2018 edition, the U.S. Customary tables formerly in Mandatory Appendix I have been merged with the SI tables in the main text; the tables and figure have been redesignated, Mandatory Appendix I has been deleted, and the cross-references have been updated accordingly. In addition, section 10 has been revised to add clarification to the wall thickness requirements in the transitional area of a reducing fitting in which there is a change from one size of end connection to another, and all reference standards in what was formerly Mandatory Appendix II have been updated. Following approval by the ASME B16 Standards Committee, approval as an American National Standard was given by ANSI on August 3, 2018, with the new designation ASME B16.15-2018.

ASMENORMDOC.COM : Click to view the full PDF of ASME B16.15 2018

ASME B16 COMMITTEE

Standardization of Valves, Flanges, Fittings, and Gaskets

(The following is the roster of the Committee at the time of approval of this Standard.)

STANDARDS COMMITTEE OFFICERS

R. Bojarczuk, *Chair*
C. Davila, *Vice Chair*
C. R. Ramcharran, *Secretary*

STANDARDS COMMITTEE PERSONNEL

A. Appleton, Alloy Stainless Products Co., Inc.
J. E. Barker, Dezurik Water Controls
K. Barron, Ward Manufacturing, LLC
D. C. Bayreuther, Metso Automation
W. Bedesem, Consultant
R. Bojarczuk, ExxonMobil Research and Engineering Co.
A. Cheta, Qatar Shell GTL
M. Clark, Consultant
G. A. Cuccio, Capitol Manufacturing Co.
J. D'Avanzo, Fluoroseal Valves
C. Davila, Crane Energy
K. S. Felder, Valero Energy
D. Frikken, Becht Engineering Co.
D. Hunt, Jr., Fastenal
G. Jolly, Samshin Ltd.
E. J. Lain, Exelon Nuclear
T. A. McMahon, Emerson Process Management

R. C. Merrick, Fluor Enterprises
M. Nayyar, NICE
W. H. Patrick, The Dow Chemical Co.
D. Rahoji, Consultant
C. R. Ramcharran, The American Society of Mechanical Engineers
D. F. Reid, VSP Technologies
R. Schmidt, Canadoil
J. Tucker, Flowserve
F. Volgstadt, Volgstadt & Associates, Inc.
F. Feng, *Delegate*, China Productivity Center for Machinery National Technical Committee
R. Barnes, *Contributing Member*, Anric Enterprises, Inc.
P. V. Craig, *Contributing Member*, Jomar Group
B. G. Fabian, *Contributing Member*, Pennsylvania Machine Works
A. G. Kireta, Jr., *Contributing Member*, Copper Development Association, Inc.

SUBCOMMITTEE B — THREADED FITTINGS (EXCEPT STEEL), FLANGES, AND FLANGED FITTINGS

D. Hunt, Jr., *Chair*, Fastenal
K. Barron, *Vice Chair*, Ward Manufacturing, LLC
J. Oh, *Secretary*, The American Society of Mechanical Engineers
W. Bliss, Tyler Pipe Company
M. Clark, Consultant
M. C. Coffey, Ward Manufacturing, LLC

J. R. Holstrom, Val-Matic Valve & Manufacturing Corporation
W. LeVan, Cast Iron Soil Pipe Institute
G. L. Simmons, Charlotte Pipe & Foundry
G. T. Walden, Wolseley
A. A. Knapp, *Contributing Member*, A. Knapp & Associates

CORRESPONDENCE WITH THE B16 COMMITTEE

General. ASME Standards are developed and maintained with the intent to represent the consensus of concerned interests. As such, users of this Standard may interact with the Committee by requesting interpretations, proposing revisions or a case, and attending Committee meetings. Correspondence should be addressed to:

Secretary, B16 Standards Committee
The American Society of Mechanical Engineers
Two Park Avenue
New York, NY 10016-5990
<http://go.asme.org/Inquiry>

Proposing Revisions. Revisions are made periodically to the Standard to incorporate changes that appear necessary or desirable, as demonstrated by the experience gained from the application of the Standard. Approved revisions will be published periodically.

The Committee welcomes proposals for revisions to this Standard. Such proposals should be as specific as possible, citing the paragraph number(s), the proposed wording, and a detailed description of the reasons for the proposal, including any pertinent documentation.

Proposing a Case. Cases may be issued to provide alternative rules when justified, to permit early implementation of an approved revision when the need is urgent, or to provide rules not covered by existing provisions. Cases are effective immediately upon ASME approval and shall be posted on the ASME Committee web page.

Requests for Cases shall provide a Statement of Need and Background Information. The request should identify the Standard and the paragraph, figure, or table number(s), and be written as a Question and Reply in the same format as existing Cases. Requests for Cases should also indicate the applicable edition(s) of the Standard to which the proposed Case applies.

Interpretations. Upon request, the B16 Standards Committee will render an interpretation of any requirement of the Standard. Interpretations can only be rendered in response to a written request sent to the Secretary of the B16 Standards Committee.

Requests for interpretation should preferably be submitted through the online Interpretation Submittal Form. The form is accessible at <http://go.asme.org/InterpretationRequest>. Upon submittal of the form, the Inquirer will receive an automatic e-mail confirming receipt.

If the Inquirer is unable to use the online form, he/she may e-mail the request to the Secretary of the B16 Standards Committee at SecretaryB16@asme.org, or mail it to the above address. The request for an interpretation should be clear and unambiguous. It is further recommended that the Inquirer submit his/her request in the following format:

- Subject: Cite the applicable paragraph number(s) and the topic of the inquiry in one or two words.
- Edition: Cite the applicable edition of the Standard for which the interpretation is being requested.
- Question: Phrase the question as a request for an interpretation of a specific requirement suitable for general understanding and use, not as a request for an approval of a proprietary design or situation. Please provide a condensed and precise question, composed in such a way that a "yes" or "no" reply is acceptable.
- Proposed Reply(ies): Provide a proposed reply(ies) in the form of "Yes" or "No," with explanation as needed. If entering replies to more than one question, please number the questions and replies.
- Background Information: Provide the Committee with any background information that will assist the Committee in understanding the inquiry. The Inquirer may also include any plans or drawings that are necessary to explain the question; however, they should not contain proprietary names or information.

Requests that are not in the format described above may be rewritten in the appropriate format by the Committee prior to being answered, which may inadvertently change the intent of the original request.

Moreover, ASME does not act as a consultant for specific engineering problems or for the general application or understanding of the Standard requirements. If, based on the inquiry information submitted, it is the opinion of the Committee that the Inquirer should seek assistance, the inquiry will be returned with the recommendation that such assistance be obtained.

ASME procedures provide for reconsideration of any interpretation when or if additional information that might affect an interpretation is available. Further, persons aggrieved by an interpretation may appeal to the cognizant ASME Committee or Subcommittee. ASME does not “approve,” “certify,” “rate,” or “endorse” any item, construction, proprietary device, or activity.

Attending Committee Meetings. The B16 Standards Committee regularly holds meetings and/or telephone conferences that are open to the public. Persons wishing to attend any meeting and/or telephone conference should contact the Secretary of the B16 Standards Committee.

ASMENORMDOC.COM : Click to view the full PDF of ASME B16.15 2019

ASME B16.15-2018

SUMMARY OF CHANGES

Following approval by the ASME B16 Committee and ASME, and after public review, ASME B16.15-2018 was approved by the American National Standards Institute on August 3, 2018.

In ASME B16.15-2018, the U.S. Customary tables formerly in Mandatory Appendix I have been merged with the SI tables in the main text; the tables and figure have been redesignated, Mandatory Appendix I has been deleted, and the cross-references have been updated accordingly. In addition, this edition includes the following changes identified by a margin note, **(18)**. The Record Numbers listed below are explained in more detail in the “List of Changes in Record Number Order” following this Summary of Changes.

<i>Page</i>	<i>Location</i>	<i>Change</i>
2	4.1	Revised editorially
2	7.2	Revised editorially
3	10	Revised in its entirety (12-581)
3	11.2	Second sentence revised editorially
3	12	Revised editorially
17	Mandatory Appendix I	Formerly Mandatory Appendix II, updated (18-942)

ASMENORMDOC.COM : Click to view the full PDF of ASME B16.15-2018

LIST OF CHANGES IN RECORD NUMBER ORDER

<u>Record Number</u>	<u>Change</u>
12-581	Revised section 10 in its entirety to clarify the wall thickness requirements in the transitional area of a reducing fitting in which there is a change from one size of end connection to another.
18-942	Updated references in Mandatory Appendix I, formerly Mandatory Appendix II.

ASMENORMDOC.COM : Click to view the full PDF of ASME B16.15 2018

ASMENORMDOC.COM : Click to view the full PDF of ASME B16.15 2018

INTENTIONALLY LEFT BLANK

CAST COPPER ALLOY THREADED FITTINGS

Classes 125 and 250

1 SCOPE

This Standard covers cast Classes 125 and 250 copper alloy threaded pipe fittings with provisions for substituting wrought copper alloys for plugs, bushings, caps, and couplings in small sizes. This Standard includes the following:

- (a) pressure-temperature ratings
- (b) size and method of designating openings of reducing pipe fittings
- (c) marking requirements
- (d) minimum requirements for casting quality and materials
- (e) dimensions and tolerances in SI (metric) and U.S. Customary units
- (f) threading requirements
- (g) pressure test requirements

2 GENERAL

2.1 Relevant Units

This Standard states values in both SI (metric) and U.S. Customary units. These systems of units are to be regarded separately as standard. Within the text, the U.S. Customary units are shown in parentheses. The values stated in each system are not exact equivalents; therefore, it is required that each system of units be used independently of the other. Combining values from the two systems constitutes nonconformance with the Standard.

2.2 References

Standards and specifications containing provisions to the extent referenced herein constitute requirements of this Standard. These referenced documents are listed in [Mandatory Appendix I](#).

2.3 Quality Systems

Requirements relating to the product manufacturer's Quality System Programs are described in [Nonmandatory Appendix A](#).

2.4 Denotation

2.4.1 Pressure Rating Designation. Class followed by a dimensionless number is the designation for pressure-temperature ratings, e.g., Class 125 and Class 250.

2.4.2 Size. NPS followed by a dimensionless number is the designation for nominal fittings size, e.g., NPS 2.

2.5 Time of Purchase, Manufacture, or Installation

The pressure-temperature ratings in this Standard are applicable upon its publication to all fittings within its scope that otherwise meet its requirements. For unused fittings maintained in inventory, the manufacturer of the fittings may certify conformance to this edition provided it can be demonstrated that all requirements of this edition have been met. Where such components were installed in accordance with the pressure-temperature ratings of an earlier edition of this Standard, those ratings are applicable except as may be governed by the applicable code or regulation.

2.6 User Accountability

This Standard cites responsibilities that are to be assumed by the fitting user in the areas of the temperature at which the pressure rating is taken.

2.7 Service Conditions

Criteria for selection of materials suitable for particular fluid service are not within the scope of this Standard.

3 PRESSURE-TEMPERATURE RATINGS

3.1 General

Pressure-temperature ratings for these pipe fittings are shown in [Table 3.1-1](#). All pressures are gage.

3.2 Rating

Pressure-temperature ratings are independent of the contained fluid and are the maximum allowable pressures at the tabulated temperatures. Intermediate ratings may be obtained by linear interpolation between the temperatures shown.

The temperature shown for the corresponding pressure rating shall be the material temperature of the pressure-retaining structure. It may be assumed that the material temperature is the same as the fluid temperature. Use of a pressure rating at a material temperature other than that of the contained fluid is the responsibility of the user and subject to the requirements of any applicable codes and regulations.

3.3 Limitations

Use of cored plugs and hexagon or octagon head bushings should be limited to Class 125 pipe fittings. Solid plugs and face bushings are recommended for use with Class 250 pipe fittings.

4 SIZE

(18) 4.1 Nominal Pipe Size

The size of the pipe fittings scheduled in the tables herein is identified by the corresponding nominal pipe size (NPS).¹

4.2 Reducing Sizes

In the case of reducing tees, crosses, and Y branches (laterals), the NPS of the largest run opening shall be given first, followed by the NPS of the opening at the opposite end of the run. Where the pipe fitting is a tee or Y branch (lateral), the NPS of the outlet is given last. Where the pipe fitting is a cross, the largest side-outlet opening is the third dimension given, followed by the opening opposite. The straight line sketches of [Figure 4.2-1](#) illustrate how the reducing pipe fittings are read.

5 MARKING

5.1 Class 125 Fitting

Each Class 125 pipe fitting shall be marked for identification with the manufacturer's name or trademark.

5.2 Class 250 Fitting

Each Class 250 pipe fitting shall be marked for identification with the manufacturer's name or trademark and the numerals "250."

5.3 Exceptions

Omission of markings is permissible when fittings are too small to provide sufficient marking area.

6 MATERIAL

(a) Castings shall be produced to meet the requirements of ASTM B62, alloy UNS C83600, or the chemical and tensile requirements of ASTM B584, alloys UNS C83800 or UNS C84400, and in all other respects shall conform to the requirements of ASTM B62.

(b) Bar stock, when used for manufacturing smaller sizes of wrought plugs, bushings, caps, and couplings, shall be in accordance with the requirements of ASTM B16, alloy UNS C36000, or ASTM B140, alloy UNS C32000 or UNS C31400.

¹The use of the word "nominal" as a modifier of a dimension or size is intended to indicate that the stated dimension or size is used for purposes of designation.

7 THREADS

7.1 Thread Form

All threads shall be in accordance with ASME B1.20.1.

7.1.1 Countersinks and Chamfers. All internal taper pipe threads shall be countersunk or chamfered a distance not less than one-half the pitch of the thread at an angle of approximately 45 deg with the axis of the thread. External taper pipe threads shall be chamfered at an angle between 30 deg and 45 deg with the axis for easier entrance in making a joint and protection of the thread. Countersinking and chamfering shall be concentric with the threads. The length of threads specified in all tables shall be measured to include the countersink or chamfer.

7.1.2 Alignment. The maximum allowable variation in the alignment of threads of all openings shall be 5.0 mm/m (0.06 in./ft).

7.1.3 Internal Threading

(a) All fittings with internal threads except as allowed in (b) shall be threaded with ASME B1.20.1 NPT threads. The reference point for gaging is the starting end of the fitting, provided the chamfer does not exceed the major diameter of the internal thread. When a chamfer on the internal thread exceeds this limit, the reference point becomes the last thread scratch on the chamfer cone.

(b) Wrought couplings ([Table 7.1.3-1](#)), wrought caps ([Table 7.1.3-2](#)), and wrought bushings ([Table 7.1.3-3](#)) in sizes NPS $\frac{1}{8}$, NPS $\frac{1}{4}$, NPS $\frac{3}{8}$, and NPS $\frac{1}{2}$ shall have NPT or NPSC internal threads.

7.1.4 External Threading. All externally threaded fittings shall be threaded with ASME B1.20.1 NPT threads. The reference point for gaging is the end of the thread, provided the chamfer is not smaller than the minor diameter of the external thread. When a chamfer on the external thread exceeds this limit, the reference point becomes the last thread scratch on the chamfer cone.

7.2 Gaging Tolerances

(18)

For taper pipe threads, the variation in threading shall be limited to one turn large or one turn small from the gaging notch on the plug or the gaging face of the ring when using working gages. For straight pipe threads, the variation in threading shall be limited to $1\frac{1}{2}$ turns large or $1\frac{1}{2}$ turns small from the gaging notch on the plug when using working gages.

8 RIBS

The addition of ribs or lugs is permitted on threaded pipe fittings. Where ribs are used, it is recommended that their thickness be the same as specified for the metal thickness of the pipe fitting.

(a) Right-hand couplings shall not have more than two ribs.

(b) Right- and left-hand couplings shall have four or more ribs unless the left-hand opening is clearly marked "L," in which case the use of ribs is optional with the manufacturer.

(c) Wrought couplings do not require opening markings.

9 SURFACE FINISH

Cast pipe fittings shall be furnished with a rough exterior surface, free of sand inclusions, fins, and gate protrusions.

(18) **10 FITTING DIMENSIONS**

10.1 General

10.1.1 Tables of center-to-end dimensions are given for both straight and reducing pipe fittings. The SI dimensions and tolerances shown as whole or multiples of 0.5 mm in tables may differ slightly in absolute value from the corresponding U.S. Customary dimensions in parentheses. Any dimension that is within tolerance by either SI or U.S. Customary measurement is considered to be in conformance with this Standard.

10.1.2 The sketches of fittings accompanying Tables 7.1.3-1 through 7.1.3-3 and Tables 10.1.2-1 through 10.1.2-8 are representative and are included for the purpose of illustration.

10.2 Reducing Fittings

10.2.1 The dimensions of reducing fittings shown in Tables 10.1.2-1 through 10.1.2-4 and Table 10.1.2-6 are for use only when making patterns for the specific reducing pipe fitting in question and do not apply when a larger size pattern is reduced (i.e., "bushed") to make the reduction or reductions in the fitting. Reducing pipe fitting patterns shall be designed to produce wall thicknesses and detail and dimensions as required for the sizes involved.

10.2.2 The transition in wall thickness from one end size to another shall be in a manner that minimizes the addition of stress caused by sudden changes in direction or wall thickness.

10.2.3 Proof of design shall be verified by a hydrostatic pressure test made at ambient temperature in which pressure is applied for a continuous period of not less than 1 min and at a constant minimum pressure of not less than 4 times the pressure rating of the largest size of end connection in the reducing fitting. Testing is considered successful only when no evidence of cracking, fracturing, or leakage is exhibited after holding for at least the minimum time at or above the required pressure.

11 TOLERANCES

11.1 Convention

For determining conformance with this Standard, the convention for fixing significant digits where limits (maximum and minimum values) are specified shall be as defined in ASTM E29. This requires that an observed or calculated value be rounded off to the nearest unit in the last right-hand digit used for expressing the limit. Decimal values and tolerances do not imply a particular method of measurement.

11.2 Metal Thickness

(18)

Dimensional variations are unavoidable in the casting process. Patterns shall be designed to produce castings of metal thicknesses given in the tables herein. Metal thickness at no point shall be less than 90% of the thicknesses given in the tables.

11.3 Dimensions

The tolerances shown in Table 11.3-1 shall be permitted in center-to-end and center-to-center dimensions of fittings; tolerances for end-to-end dimensions shall be twice those given. The largest opening in reducing pipe fittings governs the tolerances to be applied to all openings.

12 PRESSURE TEST

(18)

Pressure testing is not required; however, the fittings shall be capable of withstanding, without leakage, an internal fluid pressure of 2 times the 38°C (100°F) pressure rating for 1 min.

Table 3.1-1 Pressure-Temperature Ratings

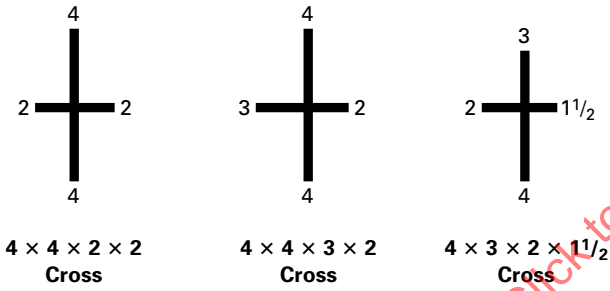
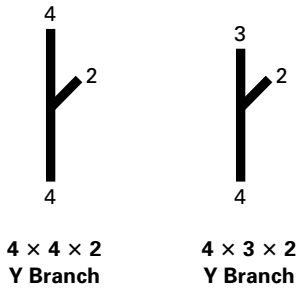
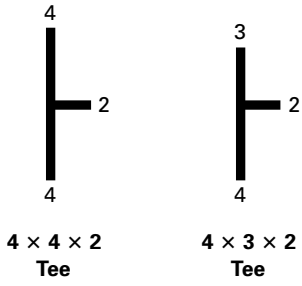
Temperature, °C (°F)	Class 125, bar (psi)	Class 250, bar (psi)
-29 to 66 (-20 to 150)	13.8 (200)	27.6 (400)
100 (200)	12.9 (190)	26.2 (385)
125 (250)	12.3 (180)	24.9 (365)
150 (300)	11.3 (165)	23.0 (335)
175 (350)	10.4 (150)	20.8 (300)
200 (400)	8.9 (125)	17.8 (250)

GENERAL NOTES:

(a) 1 bar = 14.5 psi = 10⁵ Pa.

(b) °C = 0.5556(°F - 32).

Figure 4.2-1 Identification of Reducing Fittings



ASMENORMDOC.COM : Click to view the full PDF of ASME B16.15 2018

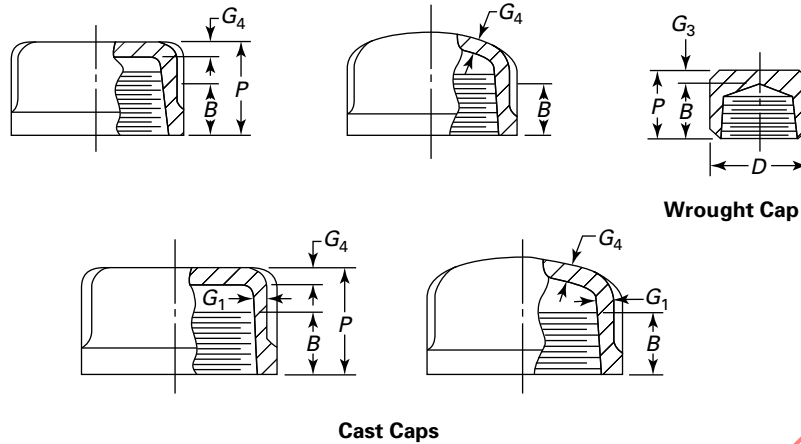
Table 7.1.3-1 Dimensions of 90-deg Elbows, Tees, Crosses, 45-deg Elbows, and Couplings (Straight Sizes) — Class 125

NPS	90-deg Elbow		Tee		Cross		45-deg Elbow		Cast Couplings [Note (2)]		Wrought Couplings [Note (2)]	
	Center-to-End Elbows, Tees, and Crosses, A, mm (in.)	Minimum Length of Thread, B, mm (in.) [Note (2)]	Center-to-End, 45-deg Elbows, C, mm (in.)	Wrought Coupling Diameter, D, mm (in.) [Note (3)]	Minimum Band Length, E, mm (in.)	Inside Diameter of Cast Fitting, F, mm (in.)	Minimum Band Diameter, H, mm (in.)	End-to-End Straight Coupling, W, mm (in.)	Center-to-End, 45-deg Elbows, C, mm (in.)	Minimum Band Length, E, mm (in.)	Minimum Band Diameter, H, mm (in.)	End-to-End Straight Coupling, W, mm (in.)
1/8	14 (0.54)	6 (0.25)	11 (0.42)	14 (0.56)	4 (0.14)	10 (0.41)	17 (0.67)	20 (0.80)	11 (0.44)	17 (0.67)	20 (0.80)	21 (0.83)
1/4	18 (0.71)	8 (0.32)	14 (0.56)	17 (0.69)	4 (0.16)	14 (0.54)	21 (0.81)	25 (0.97)	15 (0.58)	21 (0.81)	25 (0.97)	26 (1.03)
3/8	21 (0.82)	9 (0.36)	16 (0.63)	21 (0.84)	4 (0.17)	17 (0.68)	25 (1.00)	27 (1.05)	18 (0.72)	25 (1.00)	27 (1.05)	28 (1.11)
1/2	26 (1.01)	11 (0.43)	20 (0.78)	27 (1.06)	5 (0.19)	21 (0.84)	30 (1.17)	33 (1.29)	23 (0.90)	30 (1.17)	33 (1.29)	35 (1.36)
3/4	30 (1.18)	13 (0.50)	23 (0.89)	33 (1.31)	6 (0.23)	27 (1.05)	36 (1.42)	38 (1.50)	28 (1.11)	36 (1.42)	38 (1.50)	38 (1.50)
1	36 (1.43)	15 (0.58)	27 (1.06)	...	7 (0.27)	34 (1.32)	44 (1.72)	43 (1.68)	35 (1.39)	44 (1.72)	43 (1.68)	...
1 1/4	43 (1.69)	17 (0.67)	31 (1.22)	...	8 (0.31)	42 (1.66)	53 (2.10)	47 (1.86)	44 (1.73)	53 (2.10)	47 (1.86)	...
1 1/2	47 (1.84)	18 (0.70)	33 (1.30)	...	9 (0.34)	48 (1.90)	60 (2.38)	49 (1.92)	50 (1.97)	60 (2.38)	49 (1.92)	...
2	54 (2.12)	19 (0.75)	37 (1.45)	...	10 (0.41)	60 (2.38)	74 (2.92)	56 (2.20)	62 (2.45)	74 (2.92)	56 (2.20)	...
2 1/2 [Note (5)]	69 (2.70)	23 (0.92)	50 (1.95)	...	12 (0.48)	73 (2.88)	89 (3.49)	73 (2.88)	76 (2.98)	89 (3.49)	73 (2.88)	...
3	78 (3.08)	25 (0.98)	55 (2.17)	...	14 (0.55)	89 (3.50)	107 (4.20)	81 (3.18)	91 (3.60)	107 (4.20)	81 (3.18)	...
4	96 (3.79)	27 (1.08)	66 (2.61)	...	17 (0.66)	114 (4.50)	135 (5.31)	94 (3.69)	117 (4.60)	135 (5.31)	94 (3.69)	...

NOTES:

- (1) A 5-deg bevel on the face is optional.
- (2) Dimension B for wrought couplings includes minimum length of perfect thread. The length of useful thread (B plus threads with fully formed roots and flat crests) shall not be less than L₂ (effective length of external thread) required by ASME B1.20.1. See section 7.
- (3) Couplings size NPS 3/4 and smaller may be cast or made from bar at the option of the manufacturer. Diameter, D, is in commercial bar sizes.
- (4) For metal thickness tolerance, see para. 11.2.
- (5) The dimensions for NPS 2 1/2 and larger are in accordance with ASME B16.3 for Class 150 malleable iron threaded fittings.

Table 7.1.3-2 Dimensions of Caps — Class 125



Wrought Cap

Cast Caps

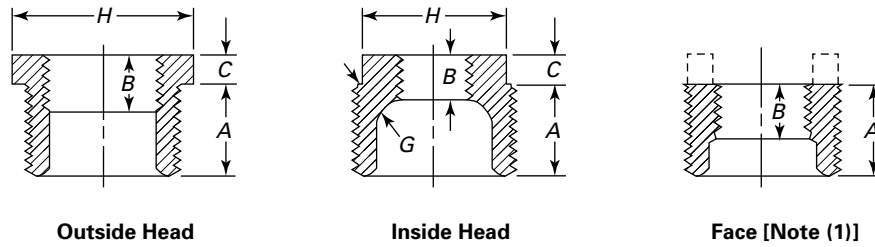
NPS	Minimum Length of Thread, mm (in.) [Note (1)]		Wrought Cap Diameter, D , mm (in.) [Note (2)]	Metal Thickness, mm (in.) [Note (3)]			Minimum Height of Cap, P , mm (in.)	
	B	L_2		G_1	G_3	G_4	Cast	Wrought
1/8	6 (0.25)	6.703 (0.2639)	14 (0.56)	2.0 (0.08)	2.8 (0.11)	2.3 (0.09)	12 (0.49)	12 (0.49)
1/4	8 (0.32)	10.206 (0.4018)	18 (0.69)	2.0 (0.08)	3.3 (0.13)	2.5 (0.10)	15 (0.59)	15 (0.59)
3/8	9 (0.36)	10.358 (0.4078)	21 (0.84)	2.3 (0.09)	3.3 (0.13)	2.8 (0.11)	16 (0.64)	17 (0.68)
1/2	11 (0.43)	13.556 (0.5337)	27 (1.06)	2.3 (0.09)	3.6 (0.14)	3.0 (0.12)	19 (0.76)	21 (0.84)
3/4	13 (0.50)	13.861 (0.5457)	33 (1.31)	2.5 (0.10)	3.8 (0.15)	3.3 (0.13)	21 (0.84)	24 (0.94)
1	15 (0.58)	17.343 (0.6828)	...	2.8 (0.11)	...	3.8 (0.15)	25 (0.99)	...
1 1/4	17 (0.67)	17.953 (0.7068)	...	3.0 (0.12)	...	4.3 (0.17)	28 (1.10)	...
1 1/2	18 (0.70)	18.377 (0.7235)	...	3.3 (0.13)	...	4.8 (0.19)	29 (1.15)	...
2	19 (0.75)	19.215 (0.7565)	...	3.8 (0.15)	...	5.6 (0.22)	34 (1.32)	...
2 1/2 [Note (4)]	23 (0.92)	28.892 (1.1375)	...	4.3 (0.17)	...	6.3 (0.25)	43 (1.70)	...
3	25 (0.98)	30.480 (1.2000)	...	4.8 (0.19)	...	7.4 (0.29)	46 (1.80)	...
4	27 (1.08)	33.020 (1.3000)	...	5.6 (0.22)	...	9.1 (0.36)	53 (2.08)	...

GENERAL NOTE: For dimensions not given, see Table 7.1.3-1.

NOTES:

- (1) Caps may be made without recess. Caps so made shall be of such height, P , that the length of perfect thread shall not be less than B , and the length of useful thread (B plus threads with fully formed roots and flat crests) shall not be less than L_2 (effective length of external thread), as required by ASME B1.20.1. All other dimensions shall be as specified for other caps.
- (2) Caps NPS 3/4 and smaller may be cast or made from bar at the option of the manufacturer. Diameter, D , is in commercial bar sizes.
- (3) For metal thickness tolerance, see para. 11.2.
- (4) The dimensions for NPS 2 1/2 and larger are in accordance with ASME B16.3 for Class 150 malleable iron threaded fittings.

Table 7.1.3-3 Dimensions of Outside Head, Inside Head, and Face Bushings — Class 250



NPS	Minimum Length of External Thread, A, mm (in.)	Minimum Length of Internal Thread, B, mm (in.)	Minimum Height of Head, C, mm (in.)	Minimum Width of Head, H, mm (in.) [Note (2)]		Metal Thickness, G, mm (in.) [Note (3)]
				Outside	Inside	
1/4 x 1/8	11 (0.44)	7 (0.26) [Note (4)]	4 (0.14)	16 (0.64) [Note (5)]
3/8 x 1/4	12 (0.48)	10 (0.40) [Note (4)]	4 (0.16)	17 (0.68) [Note (5)]
3/8 x 1/8	12 (0.48)	6 (0.25)	4 (0.16)	17 (0.68) [Note (5)]
1/2 x 3/8	14 (0.56)	10 (0.41) [Note (4)]	5 (0.19)	22 (0.87) [Note (5)]
1/2 x 1/4	14 (0.56)	8 (0.32)	5 (0.19)	22 (0.87) [Note (5)]
1/2 x 1/8	14 (0.56)	6 (0.25)	5 (0.19)	22 (0.87) [Note (5)]
3/4 x 1/2	16 (0.63)	13 (0.53) [Note (4)]	6 (0.22)	29 (1.15) [Note (5)]
3/4 x 3/8	16 (0.63)	9 (0.36)	6 (0.22)	29 (1.15) [Note (5)]
3/4 x 1/4	16 (0.63)	8 (0.32)	6 (0.22)	29 (1.15) [Note (5)]
1 x 3/4	19 (0.75)	13 (0.50)	6 (0.25)	36 (1.42) [Note (5)]
1 x 1/2	19 (0.75)	11 (0.43)	6 (0.25)	36 (1.42) [Note (5)]
1 x 3/8	19 (0.75)	9 (0.36)	8 (0.30)	...	28 (1.12)	...
1 x 1/4	19 (0.75)	8 (0.32)	8 (0.30)	...	28 (1.12)	...
1 1/4 x 1	20 (0.80)	15 (0.58)	7 (0.28)	45 (1.76)
1 1/4 x 3/4	20 (0.80)	13 (0.50)	7 (0.28)	45 (1.76)
1 1/4 x 1/2	20 (0.80)	11 (0.43)	9 (0.34)	...	34 (1.34)	4.7 (0.185)
1 1/4 x 3/8	20 (0.80)	9 (0.36)	9 (0.34)	...	28 (1.12)	4.7 (0.185)
1 1/2 x 1 1/4	21 (0.83)	18 (0.71) [Note (4)]	8 (0.31)	51 (2.00)
1 1/2 x 1	21 (0.83)	15 (0.58)	8 (0.31)	51 (2.00)
1 1/2 x 3/4	21 (0.83)	13 (0.50)	9 (0.37)	...	41 (1.63)	5.1 (0.200)
1 1/2 x 1/2	21 (0.83)	11 (0.43)	9 (0.37)	...	34 (1.34)	5.1 (0.200)
2 x 1 1/2	22 (0.88)	18 (0.70)	9 (0.34)	63 (2.48)
2 x 1 1/4	22 (0.88)	17 (0.67)	9 (0.34)	63 (2.48)
2 x 1	22 (0.88)	15 (0.58)	10 (0.41)	...	50 (1.95)	5.6 (0.220)
2 x 3/4	22 (0.88)	13 (0.50)	10 (0.41)	...	41 (1.63)	5.6 (0.220)
2 x 1/2	22 (0.88)	11 (0.43)	10 (0.41)	...	34 (1.34)	5.6 (0.220)
2 1/2 x 2	27 (1.07)	19 (0.75)	9 (0.37)	76 (2.98)
2 1/2 x 1 1/2	27 (1.07)	18 (0.70)	11 (0.44)	68 (2.68)
2 1/2 x 1 1/4	27 (1.07)	17 (0.67)	11 (0.44)	...	61 (2.39)	6.1 (0.240)
2 1/2 x 1	27 (1.07)	15 (0.58)	11 (0.44)	...	50 (1.95)	6.1 (0.240)
3 x 2 1/2	29 (1.13)	23 (0.92)	10 (0.40)	98 (3.86)
3 x 2	29 (1.13)	19 (0.75)	12 (0.48)	83 (3.28)
3 x 1 1/2	29 (1.13)	18 (0.70)	12 (0.48)	...	68 (2.68)	6.6 (0.260)
3 x 1 1/4	29 (1.13)	17 (0.67)	12 (0.48)	...	61 (2.39)	6.6 (0.260)

Table 7.1.3-3 Dimensions of Outside Head, Inside Head, and Face Bushings — Class 250 (Cont'd)

NPS	Minimum Length of External Thread, <i>A</i> , mm (in.)	Minimum Length of Internal Thread, <i>B</i> , mm (in.)	Minimum Height of Head, <i>C</i> , mm (in.)	Minimum Width of Head, <i>H</i> , mm (in.) [Note (2)]		Metal Thickness, <i>G</i> , mm (in.) [Note (3)]
				Outside	Inside	
4 × 3	31 (1.22)	25 (0.98)	13 (0.50)	117 (4.62)
4 × 2½	31 (1.22)	23 (0.92)	15 (0.60)	...	98 (3.86)	7.9 (0.310)
4 × 2	31 (1.22)	19 (0.75)	15 (0.60)	...	83 (3.28)	7.9 (0.310)
4 × 1½	31 (1.22)	18 (0.70)	15 (0.60)	...	68 (2.68)	7.9 (0.310)

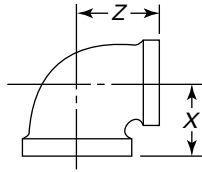
GENERAL NOTES:

- (a) For pressure class recommendations, see [para. 3.3](#).
 (b) Bushings reducing to pipe sizes smaller than given are bushed from the smallest reduction appearing in the table.

NOTES:

- (1) The addition of lugs on face bushings is not prohibited.
 (2) Heads of bushings shall be hexagonal or octagonal.
 (3) Metal thickness, *G*, is the same as Class 125 cast iron threaded fittings of ASME B16.4. For tolerance, see [para. 11.2](#).
 (4) To provide proper metal thickness, these sizes shall not be cored out to diameters greater than the root diameter of the internal thread. The length of the internal thread may be equal to the minimum dimension, *B*, or greater, up to the full length of the bushing.
 (5) Bushings in these sizes may be made from regular hexagon or octagon bar stock sizes.

Table 10.1.2-1 Dimensions of 90-deg Elbows (Reducing Sizes) — Class 125



**90-deg Elbow,
Reducing**

NPS	Center-to-End, mm (in.)	
	X	Z
$\frac{1}{4} \times \frac{1}{8}$	17 (0.65)	15 (0.60)
$\frac{3}{8} \times \frac{1}{4}$	19 (0.75)	20 (0.78)
$\frac{1}{2} \times \frac{3}{8}$	24 (0.93)	23 (0.90)
$\frac{3}{4} \times \frac{1}{2}$	27 (1.08)	28 (1.11)
$1 \times \frac{3}{4}$	33 (1.30)	33 (1.31)
$1 \times \frac{1}{2}$	30 (1.20)	31 (1.24)
$1\frac{1}{4} \times 1$	39 (1.52)	41 (1.60)
$1\frac{1}{4} \times \frac{3}{4}$	35 (1.39)	38 (1.48)
$1\frac{1}{2} \times 1\frac{1}{4}$	44 (1.72)	46 (1.81)
$1\frac{1}{2} \times 1$	39 (1.55)	44 (1.72)
$2 \times 1\frac{1}{2}$	48 (1.89)	53 (2.07)
$2\frac{1}{2} \times 2$ [Note (1)]	61 (2.39)	66 (2.60)
$3 \times 2\frac{1}{2}$	72 (2.83)	76 (2.99)
4×3	84 (3.30)	91 (3.60)

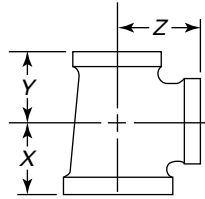
GENERAL NOTES:

- (a) See [para. 10.2](#) for requirements concerning patterns for reducing fittings.
- (b) For dimensions not given, see [Table 7.1.3-1](#).

NOTE: (1) The dimensions for NPS $2\frac{1}{2}$ and larger are in accordance with ASME B16.3 for Class 150 malleable iron threaded fittings.

ASMENORMDOC.COM. Click to view the full PDF of ASME B16.15 2018

Table 10.1.2-2 Dimensions of Tees (Reducing Sizes) — Class 125



Tee, Reducing

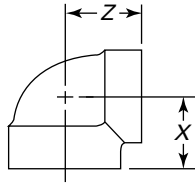
NPS	Center-to-End, mm (in.)			NPS	Center-to-End, mm (in.)		
	X	Y	Z		X	Y	Z
$\frac{1}{4} \times \frac{1}{4} \times \frac{1}{8}$	17 (0.65)	17 (0.65)	15 (0.60)	$1\frac{1}{4} \times 1 \times \frac{3}{4}$	35 (1.39)	33 (1.30)	38 (1.48)
$\frac{3}{8} \times \frac{3}{8} \times \frac{1}{4}$	19 (0.75)	19 (0.75)	20 (0.78)	$1\frac{1}{4} \times \frac{3}{4} \times 1\frac{1}{4}$	43 (1.69)	38 (1.48)	43 (1.69)
$\frac{3}{8} \times \frac{1}{4} \times \frac{3}{8}$	21 (0.82)	20 (0.78)	21 (0.82)	$1\frac{1}{4} \times \frac{1}{2} \times 1\frac{1}{4}$	43 (1.69)	36 (1.40)	43 (1.69)
$\frac{3}{8} \times \frac{1}{4} \times \frac{1}{4}$	19 (0.75)	18 (0.71)	20 (0.78)	$1 \times 1 \times 1\frac{1}{4}$	41 (1.60)	41 (1.60)	39 (1.52)
$\frac{1}{2} \times \frac{1}{2} \times \frac{3}{8}$	24 (0.93)	24 (0.93)	23 (0.90)	$1\frac{1}{2} \times 1\frac{1}{2} \times 1\frac{1}{4}$	44 (1.72)	44 (1.72)	46 (1.81)
$\frac{1}{2} \times \frac{1}{2} \times \frac{1}{4}$	22 (0.87)	22 (0.87)	22 (0.87)	$1\frac{1}{2} \times 1\frac{1}{2} \times 1$	39 (1.55)	39 (1.55)	44 (1.72)
$\frac{1}{2} \times \frac{3}{8} \times \frac{1}{2}$	26 (1.01)	23 (0.90)	26 (1.01)	$1\frac{1}{2} \times 1\frac{1}{2} \times \frac{3}{4}$	36 (1.42)	36 (1.42)	41 (1.60)
$\frac{1}{2} \times \frac{3}{8} \times \frac{3}{8}$	24 (0.93)	21 (0.82)	23 (0.90)	$1\frac{1}{2} \times 1\frac{1}{2} \times \frac{1}{2}$	34 (1.32)	34 (1.32)	39 (1.53)
$\frac{3}{8} \times \frac{3}{8} \times \frac{1}{2}$	23 (0.90)	23 (0.90)	24 (0.93)	$1\frac{1}{2} \times 1\frac{1}{4} \times 1\frac{1}{2}$	47 (1.84)	46 (1.81)	47 (1.84)
$\frac{3}{4} \times \frac{3}{4} \times \frac{1}{2}$	27 (1.08)	27 (1.08)	28 (1.11)	$1\frac{1}{2} \times 1\frac{1}{4} \times 1\frac{1}{4}$	44 (1.72)	43 (1.69)	46 (1.81)
$\frac{3}{4} \times \frac{3}{4} \times \frac{3}{8}$	25 (1.00)	25 (1.00)	25 (1.00)	$1\frac{1}{2} \times 1\frac{1}{4} \times 1$	39 (1.55)	39 (1.52)	44 (1.72)
$\frac{3}{4} \times \frac{1}{2} \times \frac{3}{4}$	30 (1.18)	28 (1.11)	30 (1.18)	$1\frac{1}{2} \times \frac{3}{4} \times 1\frac{1}{2}$	47 (1.84)	41 (1.60)	47 (1.84)
$\frac{3}{4} \times \frac{1}{2} \times \frac{1}{2}$	27 (1.08)	26 (1.01)	28 (1.11)	$1\frac{1}{4} \times 1\frac{1}{4} \times 1\frac{1}{2}$	46 (1.81)	46 (1.81)	44 (1.72)
$\frac{1}{2} \times \frac{1}{2} \times \frac{3}{4}$	28 (1.11)	28 (1.11)	27 (1.08)	$1 \times 1 \times 1\frac{1}{2}$	44 (1.72)	44 (1.72)	39 (1.55)
$1 \times 1 \times \frac{3}{4}$	33 (1.30)	33 (1.30)	33 (1.31)	$2 \times 2 \times 1\frac{1}{2}$	48 (1.89)	48 (1.89)	53 (2.07)
$1 \times 1 \times \frac{1}{2}$	30 (1.20)	30 (1.20)	31 (1.24)	$2 \times 2 \times 1\frac{1}{4}$	45 (1.77)	45 (1.77)	52 (2.04)
$1 \times 1 \times \frac{3}{8}$	28 (1.12)	28 (1.12)	29 (1.13)	$2 \times 2 \times 1$	40 (1.59)	40 (1.59)	50 (1.95)
$1 \times \frac{3}{4} \times 1$	36 (1.43)	33 (1.31)	36 (1.43)	$2 \times 2 \times \frac{3}{4}$	37 (1.47)	37 (1.47)	47 (1.84)
$1 \times \frac{3}{4} \times \frac{3}{4}$	33 (1.30)	30 (1.18)	33 (1.31)	$2 \times 1\frac{1}{2} \times 2$	54 (2.12)	53 (2.07)	54 (2.12)
$1 \times \frac{3}{4} \times \frac{1}{2}$	30 (1.20)	27 (1.08)	31 (1.24)	$2 \times 1\frac{1}{2} \times 1\frac{1}{2}$	48 (1.89)	47 (1.84)	53 (2.07)
$1 \times \frac{1}{2} \times 1$	36 (1.43)	31 (1.24)	36 (1.43)	$1\frac{1}{2} \times 1\frac{1}{2} \times 2$	53 (2.07)	53 (2.07)	48 (1.89)
$1 \times \frac{1}{2} \times \frac{3}{4}$	33 (1.30)	28 (1.11)	33 (1.31)	$2\frac{1}{2} \times 2\frac{1}{2} \times 2$ [Note (1)]	61 (2.39)	61 (2.39)	66 (2.60)
$\frac{3}{4} \times \frac{3}{4} \times 1$	33 (1.31)	33 (1.31)	33 (1.30)	$2\frac{1}{2} \times 2 \times 2$	61 (2.39)	57 (2.25)	66 (2.60)
$1\frac{1}{4} \times 1\frac{1}{4} \times 1$	39 (1.52)	39 (1.52)	41 (1.60)	$2 \times 2 \times 2\frac{1}{2}$	66 (2.60)	66 (2.60)	61 (2.39)
$1\frac{1}{4} \times 1\frac{1}{4} \times \frac{3}{4}$	35 (1.39)	35 (1.39)	38 (1.48)	$3 \times 3 \times 2\frac{1}{2}$	72 (2.83)	72 (2.83)	76 (2.99)
$1\frac{1}{4} \times 1\frac{1}{4} \times \frac{1}{2}$	33 (1.29)	33 (1.29)	36 (1.41)	$3 \times 3 \times 2$	64 (2.52)	64 (2.52)	73 (2.89)
$1\frac{1}{4} \times 1 \times 1\frac{1}{4}$	43 (1.69)	41 (1.60)	43 (1.69)	$4 \times 4 \times 3$	84 (3.30)	84 (3.30)	91 (3.60)
$1\frac{1}{4} \times 1 \times 1$	39 (1.52)	36 (1.43)	41 (1.60)	$4 \times 4 \times 2$	70 (2.74)	70 (2.74)	87 (3.41)

GENERAL NOTES:

- (a) See para. 10.2 for requirements concerning patterns for reducing fittings.
 (b) For dimensions not given, see Table 7.1.3-1.

NOTE: (1) The dimensions for NPS $2\frac{1}{2}$ and larger are in accordance with ASME B16.3 for Class 150 malleable iron threaded fittings.

Table 10.1.2-3 Dimensions of 90-deg Elbows (Reducing Sizes) — Class 250



**90-deg Elbow,
Reducing**

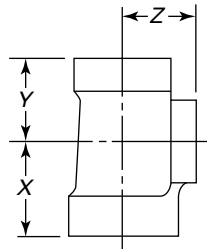
NPS	Center-to-End, mm (in.)	
	X	Z
$\frac{1}{2} \times \frac{3}{8}$	26 (1.04)	26 (1.03)
$\frac{3}{4} \times \frac{1}{2}$	30 (1.20)	31 (1.22)
$1 \times \frac{3}{4}$	35 (1.37)	37 (1.45)
$1 \times \frac{1}{2}$	32 (1.26)	35 (1.36)
$1\frac{1}{4} \times 1$	40 (1.58)	42 (1.67)
$1\frac{1}{4} \times \frac{3}{4}$	37 (1.45)	41 (1.62)
$1\frac{1}{2} \times 1\frac{1}{4}$	46 (1.82)	48 (1.88)
$1\frac{1}{2} \times 1$	42 (1.65)	46 (1.80)
$2 \times 1\frac{1}{2}$	51 (2.02)	55 (2.16)
$2 \times 1\frac{1}{4}$	48 (1.90)	53 (2.10)
$2\frac{1}{2} \times 2$	61 (2.39)	66 (2.60)
$3 \times 2\frac{1}{2}$	72 (2.83)	76 (2.99)
3×2	64 (2.52)	73 (2.89)
4×3	89 (3.50)	91 (3.60)

GENERAL NOTES:

- (a) For dimensions not given, see [Table 10.1.2-8](#).
- (b) All dimensions given in this table are in accordance with ASME B16.4 for Class 125 cast iron threaded fittings.
- (c) See [para. 10.2](#) for requirements concerning patterns for reducing fittings.

ASMENORMDOC.COM Click to view the full PDF of ASME B16.15 2018

Table 10.1.2-4 Dimensions of Tees (Reducing Sizes) — Class 250



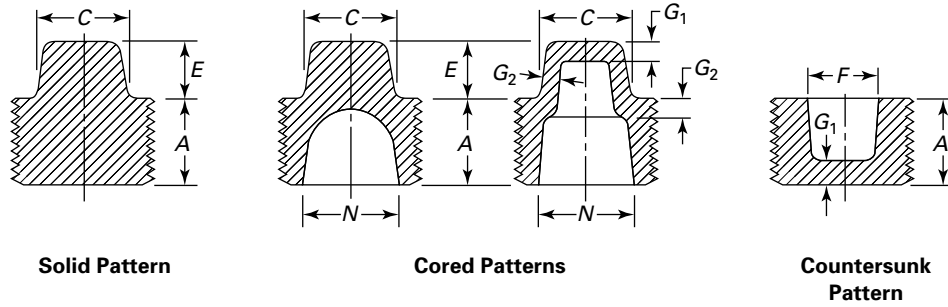
Tee, Reducing

NPS	Center-to-End, mm (in.)			NPS	Center-to-End, mm (in.)		
	X	Y	Z		X	Y	Z
$\frac{1}{2} \times \frac{1}{2} \times \frac{3}{8}$	26 (1.04)	26 (1.04)	26 (1.03)	$1\frac{1}{2} \times 1\frac{1}{2} \times 1$	42 (1.65)	42 (1.65)	46 (1.80)
$\frac{3}{4} \times \frac{3}{4} \times \frac{1}{2}$	30 (1.20)	30 (1.20)	31 (1.22)	$1\frac{1}{2} \times 1\frac{1}{2} \times \frac{3}{4}$	39 (1.52)	39 (1.52)	44 (1.75)
$\frac{3}{4} \times \frac{3}{4} \times \frac{3}{8}$	28 (1.12)	28 (1.12)	29 (1.13)	$1\frac{1}{2} \times 1\frac{1}{2} \times \frac{1}{2}$	36 (1.41)	36 (1.41)	42 (1.66)
$\frac{3}{4} \times \frac{1}{2} \times \frac{3}{4}$	33 (1.31)	31 (1.22)	33 (1.31)	$1\frac{1}{2} \times 1\frac{1}{4} \times 1\frac{1}{4}$	46 (1.82)	44 (1.75)	48 (1.88)
$\frac{3}{4} \times \frac{1}{2} \times \frac{1}{2}$	30 (1.20)	28 (1.12)	31 (1.22)	$1\frac{1}{2} \times 1\frac{1}{4} \times 1$	42 (1.65)	40 (1.58)	46 (1.80)
$\frac{1}{2} \times \frac{1}{2} \times \frac{3}{4}$	31 (1.22)	31 (1.22)	30 (1.20)	$1\frac{1}{2} \times 1 \times 1\frac{1}{2}$	49 (1.94)	46 (1.80)	49 (1.94)
$1 \times 1 \times \frac{3}{4}$	35 (1.37)	35 (1.37)	37 (1.45)	$1\frac{1}{4} \times 1\frac{1}{4} \times 1\frac{1}{2}$	48 (1.88)	48 (1.88)	46 (1.82)
$1 \times 1 \times \frac{1}{2}$	32 (1.26)	32 (1.26)	34 (1.36)	$2 \times 2 \times 1\frac{1}{2}$	51 (2.02)	51 (2.02)	55 (2.16)
$1 \times \frac{3}{4} \times 1$	38 (1.50)	37 (1.45)	38 (1.50)	$2 \times 2 \times 1\frac{1}{4}$	48 (1.90)	48 (1.90)	53 (2.10)
$1 \times \frac{3}{4} \times \frac{3}{4}$	34 (1.37)	33 (1.31)	37 (1.45)	$2 \times 2 \times 1$	44 (1.73)	44 (1.73)	51 (2.02)
$\frac{3}{4} \times \frac{3}{4} \times 1$	37 (1.45)	37 (1.45)	34 (1.37)	$2 \times 2 \times \frac{3}{4}$	41 (1.60)	41 (1.60)	50 (1.97)
$1\frac{1}{4} \times 1\frac{1}{4} \times 1$	40 (1.58)	40 (1.58)	42 (1.67)	$2 \times 2 \times \frac{1}{2}$	38 (1.49)	38 (1.49)	48 (1.88)
$1\frac{1}{4} \times 1\frac{1}{4} \times \frac{3}{4}$	37 (1.45)	37 (1.45)	41 (1.62)	$2\frac{1}{2} \times 2\frac{1}{2} \times 2$	61 (2.39)	61 (2.39)	66 (2.60)
$1\frac{1}{4} \times 1\frac{1}{4} \times \frac{1}{2}$	34 (1.34)	34 (1.34)	39 (1.53)	$3 \times 3 \times 2$	64 (2.52)	64 (2.52)	73 (2.89)
$1\frac{1}{4} \times 1 \times 1\frac{1}{4}$	44 (1.75)	42 (1.67)	44 (1.75)	$3 \times 2\frac{1}{2} \times 3$	78 (3.08)	76 (2.99)	78 (3.08)
$1\frac{1}{4} \times 1 \times 1$	40 (1.58)	38 (1.50)	42 (1.67)	$3 \times 2 \times 3$	78 (3.08)	73 (2.89)	78 (3.08)
$1\frac{1}{4} \times \frac{3}{4} \times 1\frac{1}{4}$	44 (1.75)	41 (1.62)	44 (1.75)	$4 \times 4 \times 3$	84 (3.30)	84 (3.30)	91 (3.60)
$1 \times 1 \times 1\frac{1}{4}$	42 (1.67)	42 (1.67)	40 (1.58)	$4 \times 4 \times 2$	70 (2.74)	70 (2.74)	87 (3.41)
$1\frac{1}{2} \times 1\frac{1}{2} \times 1\frac{1}{4}$	46 (1.82)	46 (1.82)	48 (1.88)	$4 \times 3 \times 4$	96 (3.79)	91 (3.60)	96 (3.79)

GENERAL NOTES:

- (a) For dimensions not given, see Table 10.1.2-8.
- (b) All dimensions given in this table are in accordance with ASME B16.4 for Class 125 cast iron threaded fittings.
- (c) See para. 10.2 for requirements concerning patterns for reducing fittings.

Table 10.1.2-5 Dimensions of Square Head and Square Socket Plugs



NPS	Minimum Thread Length, A, mm (in.)	Nominal Width Across Flats, C, mm (in.) [Note (1)]	Minimum Height of Plug Square, E, mm (in.)	Metal Thickness, mm (in.) [Note (2)]		Maximum Inside Diameter of Plug, N, mm (in.)	Nominal Size of Square Socket, F, mm (in.) [Note (3)]
				G ₁	G ₂		
1/8	7 (0.27)	7.1 (9/32)	6 (0.24)
1/4	10 (0.41)	9.5 (3/8)	7 (0.28)
3/8	10 (0.41)	11.1 (7/16)	8 (0.31)
1/2	14 (0.54)	14.3 (9/16)	10 (0.38)	2.3 (0.09)	3.0 (0.12)	13 (0.53)	9.5 (3/8)
3/4	14 (0.55)	15.8 (5/8)	11 (0.44)	2.5 (0.10)	3.3 (0.13)	19 (0.72)	12.7 (1/2)
1	18 (0.69)	20.6 (13/16)	13 (0.50)	2.8 (0.11)	3.6 (0.14)	24 (0.93)	12.7 (1/2)
1 1/4	18 (0.71)	23.8 (15/16)	14 (0.56)	3.0 (0.12)	3.8 (0.15)	32 (1.25)	19.1 (3/4)
1 1/2	19 (0.73)	28.5 (1 1/8)	16 (0.62)	3.3 (0.13)	4.1 (0.16)	37 (1.47)	19.1 (3/4)
2	19 (0.76)	33.3 (1 5/16)	17 (0.68)	3.8 (0.15)	4.3 (0.17)	49 (1.91)	22.2 (7/8)
2 1/2	27 (1.07)	38.1 (1 1/2)	19 (0.74)	4.3 (0.17)	4.6 (0.18)	59 (2.32)	28.6 (1 1/8)
3	29 (1.13)	42.8 (1 11/16)	20 (0.80)	4.8 (0.19)	4.8 (0.19)	74 (2.90)	34.9 (1 3/8)
4 [Note (4)]	31 (1.22)	57.1 (2 1/4)	23 (0.92)	5.6 (0.22)	5.6 (0.22)	97 (3.83)	50.8 (2)

GENERAL NOTE: For pressure class recommendations, see para. 3.3.

NOTES:

- (1) These dimensions for C are the nominal size of wrench as given in Table 1 of ASME B18.2.1. Square head plugs are designed to fit these wrenches. Plug squares may have opposite sides tapered a maximum of 4 deg total.
- (2) For metal thickness tolerance, see para. 11.2.
- (3) Square socket of countersunk plugs shall have dimension F to fit commercial square bars of sizes indicated. Countersunk square sockets may have opposite sides tapered a maximum of 4 deg total.
- (4) Solid pattern type having nominal pipe size greater than NPS 3 is not covered by this Standard.

Table 10.1.2-6 Dimensions of Reducers, Closed and Open Pattern Return Bends, and 45-deg Y Branches (Straight Sizes) — Class 125

NPS	Reducers, mm (in.)			Return Bends, mm (in.)		45-deg Y Branch, mm (in.)		
	End-to-End Reducing [Note (1)]			Center-to-Center		45-deg Y Branch, mm (in.)		
	One Size, M_1	Two Sizes, M_2	Three Sizes, M_3	Closed Pattern, R_1	Open Pattern, R_2	Center- to-End Inlet, T	Center- to-End Outlet, U	End-to- End, V
1/4	22 (0.88)
3/8	26 (1.01)	23 (0.92)	13 (0.50)	32 (1.28)	45 (1.78)
1/2	30 (1.17)	29 (1.13)	...	25 (1.00)	38 (1.50)	16 (0.61)	40 (1.58)	56 (2.19)
3/4	35 (1.36)	31 (1.24)	31 (1.24)	32 (1.25)	51 (2.00)	18 (0.72)	48 (1.90)	66 (2.62)
1	40 (1.56)	38 (1.49)	...	38 (1.50)	64 (2.50)	22 (0.85)	59 (2.33)	81 (3.18)
1 1/4	45 (1.77)	42 (1.65)	76 (3.00)	26 (1.02)	72 (2.83)	93 (3.85)
1 1/2	48 (1.89)	45 (1.80)	45 (1.80)	...	89 (3.50)	28 (1.10)	80 (3.14)	108 (4.24)
2	52 (2.06)	52 (2.03)	52 (2.03)	...	102 (4.00)	31 (1.24)	96 (3.76)	127 (5.00)
2 1/2 [Note (2)]	83 (3.25)
3	94 (3.69)	94 (3.69)
4	111 (4.38)

GENERAL NOTES:

- (a) See para. 10.2 for requirements concerning patterns for reducing fittings.
- (b) For dimensions not given, see Table 7.1.3-1.

NOTES:

- (1) The reduced sizes refer to the indicated nominal sizes listed in the first column, except that dimension 22 mm (0.88 in.) in the second column refers to the NPS 1/4 x 1/8 reducer.
- (2) The dimensions for NPS 2 1/2 and larger are in accordance with ASME B16.3 for Class 150 malleable iron threaded fittings.